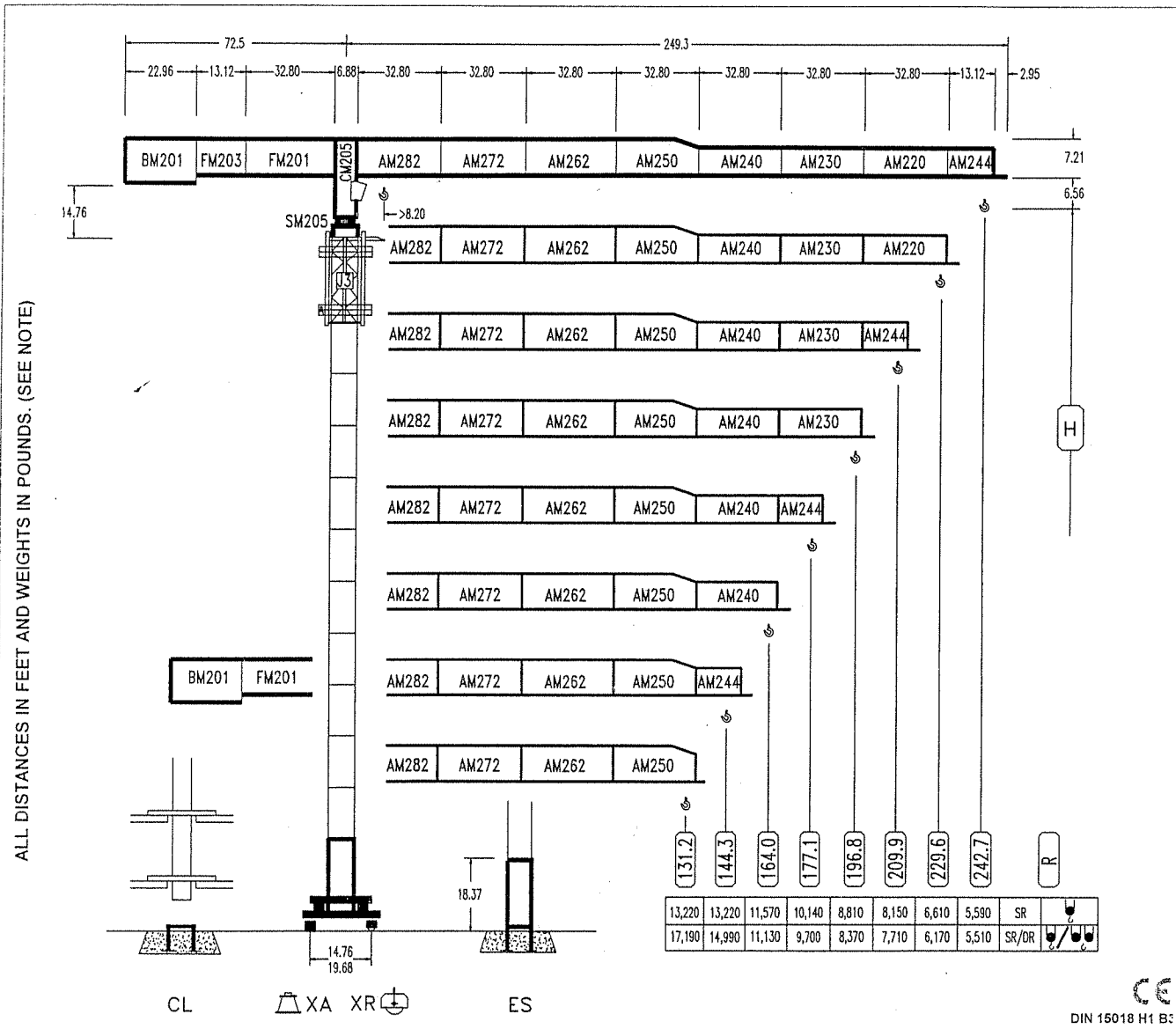
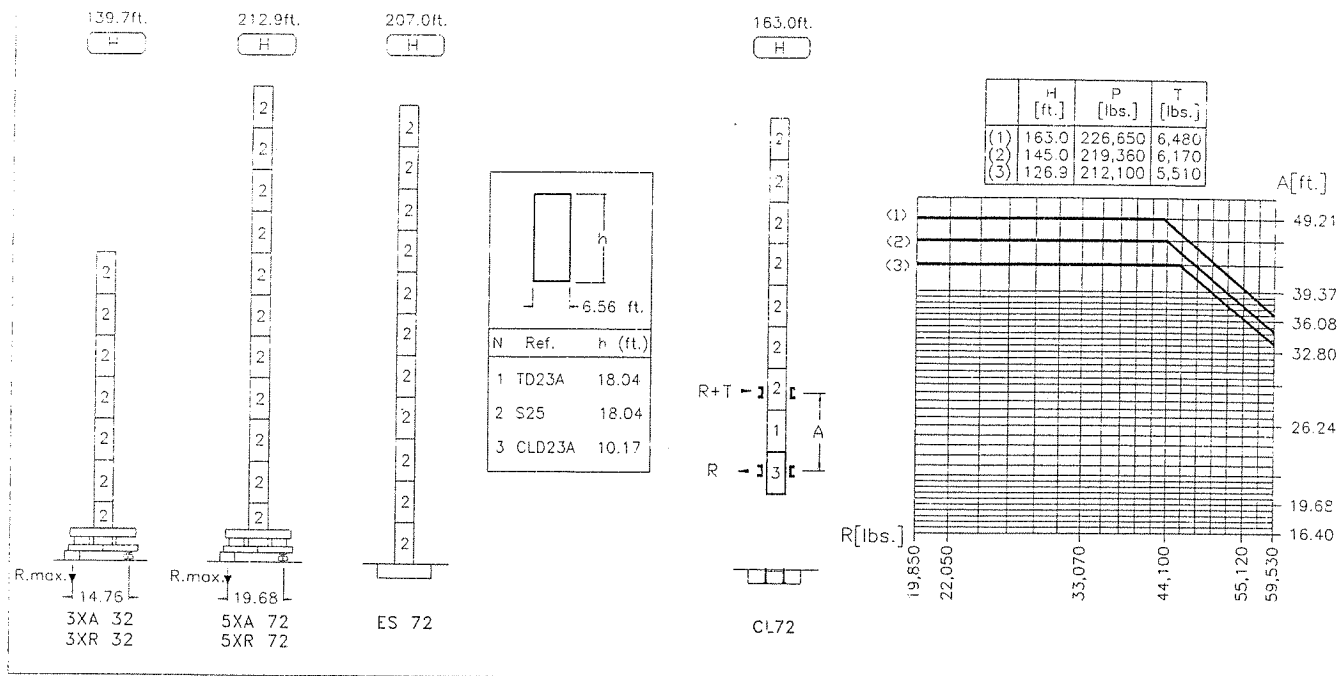


LC-2074 26,450 lbs.



DIN 15018 H1 B3

R	R(Cmax)	Cmax	98.4	111.5	131.2	144.3	164.0	177.1	196.8	209.9	229.6	242.7	(ft.)
242.7	SR	123.6	13,220	13,220	12,370	11,090	9,560	8,730	7,700	7,120	6,380	5,590	(lbs.)
	SR/DR	65.9	26,450	16,770	14,500	11,980	10,690	9,140	8,310	7,270	6,690	5,940	(lbs.)
229.6	SR	127.2	13,220	13,220	12,790	11,470	9,890	9,040	7,970	7,380	6,610	(lbs.)	
	SR/DR	67.9	26,450	17,320	14,990	12,390	11,060	9,470	8,610	7,540	6,940	6,170	(lbs.)
209.9	SR	138.4	13,220	13,220	13,220	12,610	10,890	9,960	8,810	8,160	(lbs.)	(lbs.)	
	SR/DR	73.4	26,450	19,000	16,470	13,640	12,190	10,470	9,530	8,370	7,720	(lbs.)	
196.8	SR	138.4	13,220	13,220	13,220	12,630	10,910	9,980	8,820	(lbs.)	(lbs.)	(lbs.)	
	SR/DR	73.4	26,450	19,020	16,480	13,650	12,200	10,480	9,540	8,380	(lbs.)	(lbs.)	
177.1	SR	140.4	13,220	13,220	13,220	12,830	11,080	10,140	(lbs.)	(lbs.)	(lbs.)	(lbs.)	
	SR/DR	74.4	26,450	19,310	16,740	13,870	12,400	10,650	9,700	(lbs.)	(lbs.)	(lbs.)	
164.0	SR	145.9	13,220	13,220	13,220	13,220	11,570	(lbs.)	(lbs.)	(lbs.)	(lbs.)	(lbs.)	
	SR/DR	77.4	26,450	20,130	17,460	14,480	12,950	11,130	(lbs.)	(lbs.)	(lbs.)	(lbs.)	
144.3	SR	144.3	13,220	13,220	13,220	13,220	(lbs.)	(lbs.)	(lbs.)	(lbs.)	(lbs.)	(lbs.)	
	SR/DR	87.2	26,450	23,160	20,120	16,720	14,990	(lbs.)	(lbs.)	(lbs.)	(lbs.)	(lbs.)	
131.2	SR	131.2	13,220	13,220	13,220	(lbs.)	(lbs.)	(lbs.)	(lbs.)	(lbs.)	(lbs.)	(lbs.)	
	SR/DR	89.5	26,450	23,790	20,670	17,200	(lbs.)	(lbs.)	(lbs.)	(lbs.)	(lbs.)	(lbs.)	



CS3-4.5	*CFU-5.5
7.2 hp (5.4 kW)	7.3 hp (5.5 kW)
51.1 ft./min 157.4 ft./min 314.9 ft./min	0 ⇄ 308 ft./min

GR-8.0
3 x 57.8 ft.lbs. (3 x 80 Nm)
0 ⇄ 0.7 rpm

TRA-6.5	*TRA-6.5VC
2 x 46.9 ft.lbs. (2 x 65 Nm)	
0 ⇄ 65.6 ft./min	

ES3-33-30				
53.6 hp (40 kW)				
SR	ft./min	23.6	94.4	188.9
	lbs.	13,220	13,220	6,610
DR	ft./min	11.8	47.2	94.4
	lbs.	26,450	26,450	13,220

*EFU4-45-30							
60 hp (45 kW)							
SR	lbs.	13,230	11,025	8,820	6,615	4,410	2,200
	ft./min	125	131	262	394	525	
DR	lbs.	26,450	22,350	17,640	13,230	8,820	4,480
	ft./min	62	65	131	197	262	

*EEA3-60-30							
96.5 hp (72 kW)							
SR	ft./min	11.8	177.1	19.6	291.3	47.2	708.6
	lbs.	13,220	6,610	2,640			
DR	ft./min	5.9	88.5	9.8	145.6	23.6	354.3
	lbs.	26,450	13,220	5,290			

*EPL2-45-30						
72.4 hp (54 kW)						
SR	ft./min	19.6	39.3	149.6	224.4	299.2
	lbs.	13,220	13,220	13,220	6,610	6,610
DR	ft./min	9.8	19.6	74.8	110.2	149.6
	lbs.	26,450	26,450	26,450	13,220	13,220

Tensión de alimentación Operating voltage	480 V 3 pñ 60 Hz
Sección de cable Cross section of cable	AWG nº 0 (3.5 x 50 mm²)

OPCIONAL
OPTIONAL

R. máx. En servicio In operation	3XR32 233,500 lbs. 5XR72 250,500 lbs.
R. máx. Fuera de servicio Out of service	3XR32 199,100 lbs. 5XR72 331,400 lbs.

NOTE: ALL ORIGINAL WEIGHTS AND MEASUREMENTS ARE METRIC AND ABOVE ARE ROUNDED-OFF CONVERSIONS OF SAME. FOR EXACT WEIGHTS AND MEASUREMENTS, SEE SHEET DS.9923.19 (02/00)



Construcciones Metálicas COMANSA S. A.
Polígono industrial de Areia
E-31620 Huarte-Pamplona.- SPAIN
Tel. (34) 948 335 020 - Fax: (34) 948 330 810
e-mail: info@comansa.com

3220P1082	11/00	LC-2074/26,450 lbs.
-----------	-------	---------------------



COMANSA

CONSTRUCCIONES METALICAS COMANSA, S. A.

Polygono Industrial de Areta - 31620 Huarte-Pamplona. (Navarra) SPAIN

Teléf. (9) 48-335020 - Fax (9) 48-330810

DIAGRAMA DE CARGAS
DIAGRAMME DES CHARGES
LOAD CHART
DIAGRAMMI - LAST

LC - 2074

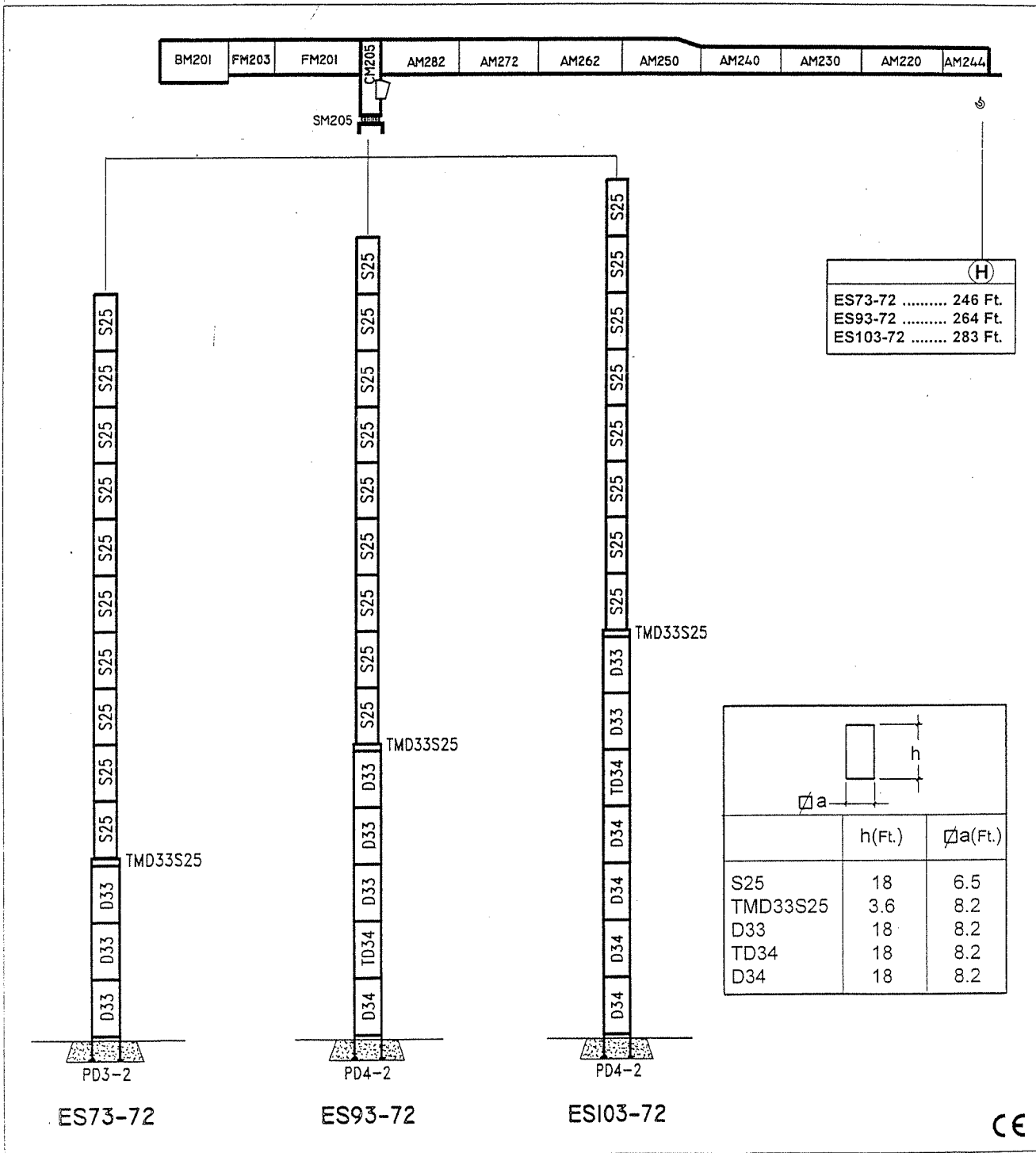
R	R _{max}	C _{max}	98.4	111.5	131.2	144.4	164.0	177.2	196.9	210.0	229.7	242.8
SR	123.7	13,228	13,228	13,228	12,370	11,090	9,560	8,730	7,700	7,120	6,380	5,950
SR/DR	66.0	26,455	16,770	14,500	11,980	10,690	9,140	8,310	7,270	6,690	5,940	5,510
SR	127.4	13,228	13,228	13,228	12,790	11,470	9,890	9,040	7,970	7,380	6,610	
SR/DR	67.8	26,455	17,320	14,990	12,390	11,060	9,470	8,610	7,540	6,940	6,170	
SR	138.4	13,228	13,228	13,228	13,228	12,610	10,890	9,960	8,810	8,160		
SR/DR	73.5	26,455	19,000	16,470	13,640	12,190	10,470	9,530	8,370	7,720		
SR	138.6	13,228	13,228	13,228	13,228	12,630	10,910	9,980	8,820			
SR/DR	73.5	26,455	19,020	16,480	13,650	12,200	10,480	9,540	8,380			
SR	140.5	13,228	13,228	13,228	13,228	12,830	11,080	10,140				
SR/DR	74.5	26,455	19,310	16,740	13,870	12,400	10,650	9,700				
SR	145.9	13,228	13,228	13,228	13,228	13,228	13,228	11,570				
SR/DR	77.3	26,455	20,130	17,460	14,480	12,950	11,130					
SR	144.4	13,228	13,228	13,228	13,228	13,228	13,228					
SR/DR	87.4	26,455	23,160	20,120	16,720	14,990						
SR	131.2	13,228	13,228	13,228	13,228							
SR/DR	89.5	26,455	23,790	20,670	17,200							



COMANSA

LC-2074

12t



Poligono Industrial de Areta
 31620 Huarte-Pamplona (Navarra) ESPAÑA
 Teléf. (9)48 - 33 00 12
 Fax (9)48 - 33 08 10
 Apartado Postal (P. O. Box) 1239
 31080 Pamplona (Navarra) ESPAÑA

3220P0987

06/97

Reserva de modificaciones.- Subject to modifications.- Modifications réservées.- Konstruktionsänderungen vorbehalten.

CE