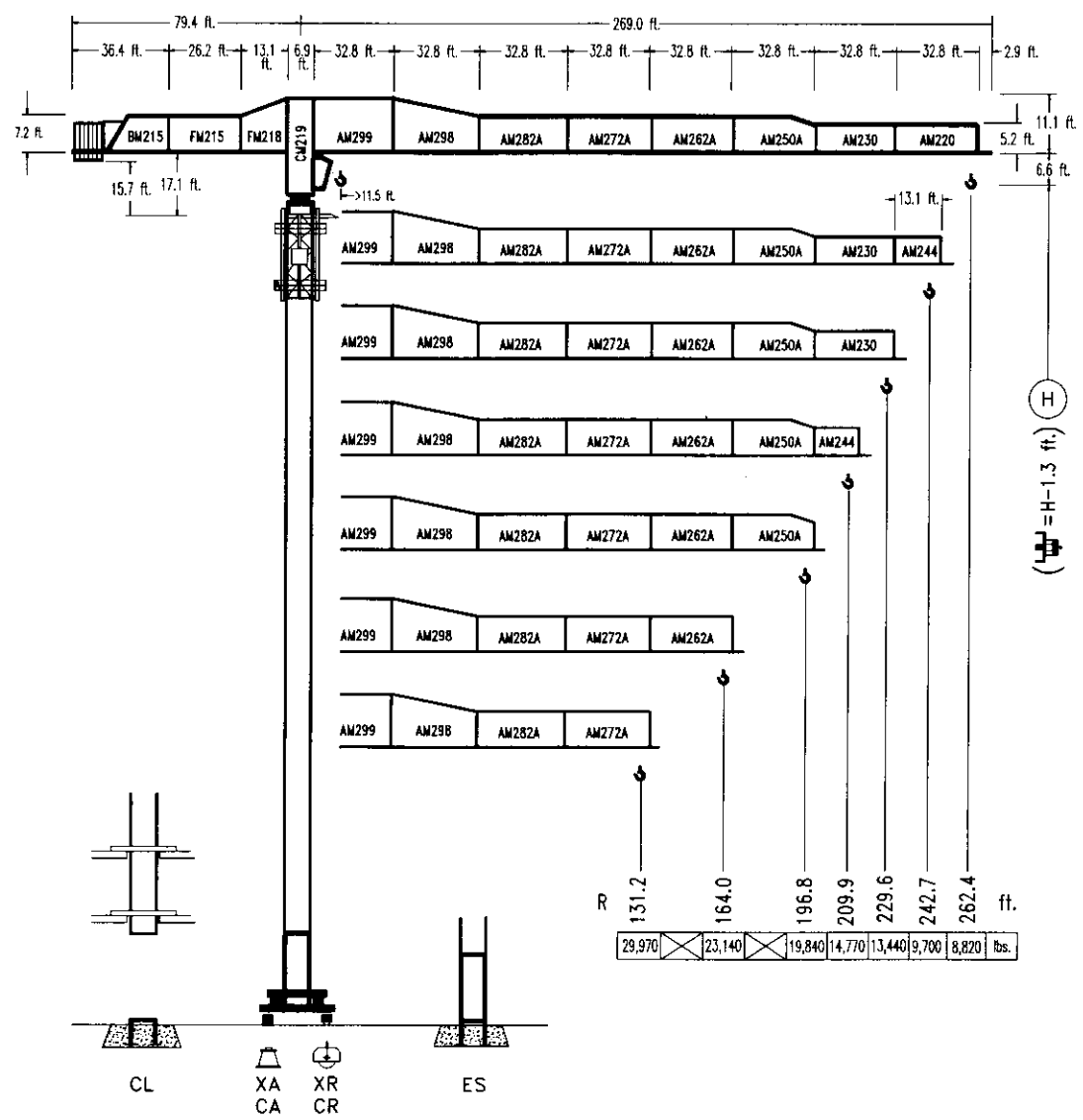
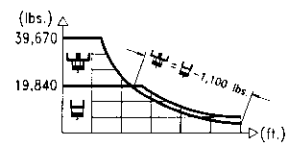


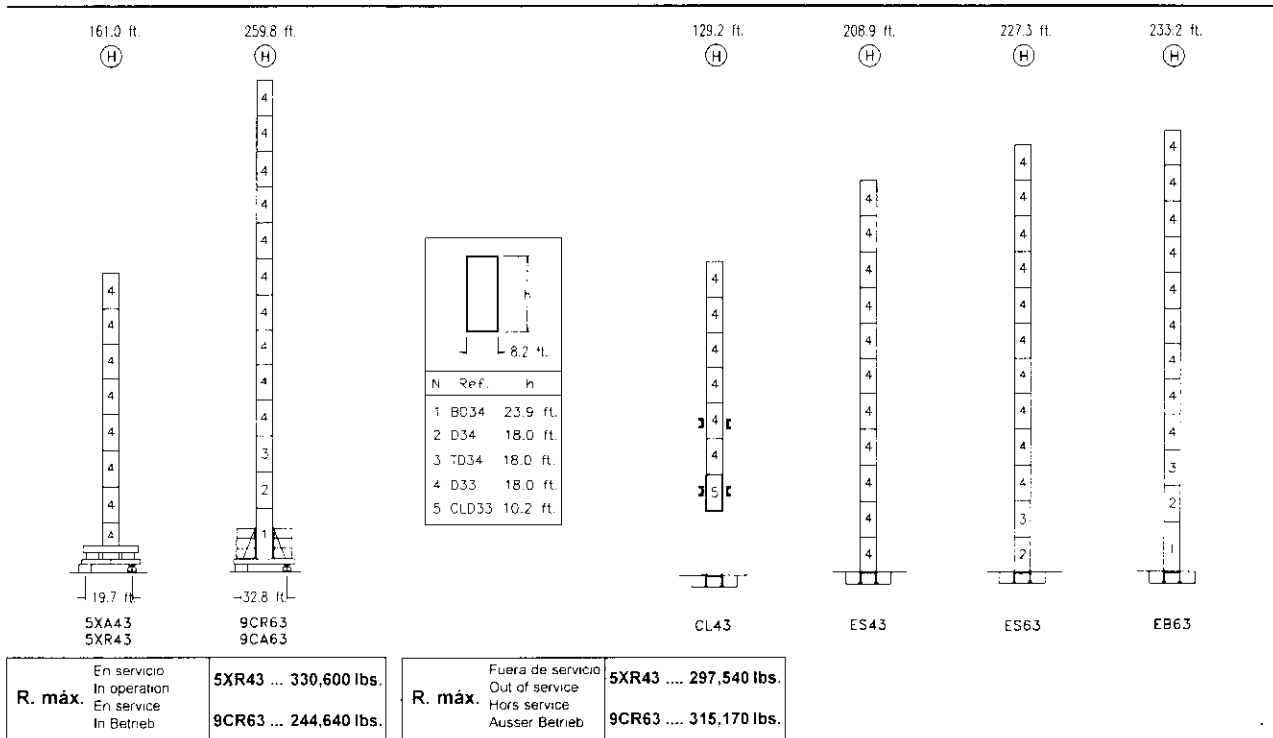
LINDEN 2100 21 LC 550 39,670 lbs.



CE
DIN 15018 H1 B3

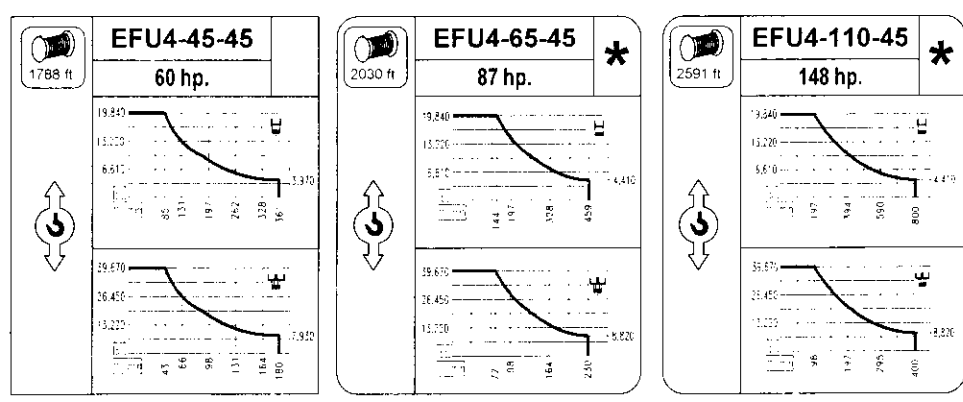
R	H												
262.4	67.6	78.7	98.4	123.7	126.9	144.3	164.0	177.1	196.8	209.9	229.6	242.7	262.4 ft.
	39,670	33,440	25,900	19,840	19,840	17,250	14,980	13,750	12,230	11,370	10,270	9,640	8,820 lbs.
242.7	67.6	78.7	98.4	123.7	127.6	144.3	164.0	177.1	196.8	209.9	229.6	242.7 ft.	
	39,670	33,430	25,890	1,840	19,840	17,330	15,060	13,830	12,300	11,440	10,340	9,700 lbs.	
229.6		84.0	98.4	111.5	131.2	153.8	161.0	177.1	196.8	209.9	229.6 ft.		
		39,670	33,140	28,750	23,870	19,840	19,840	17,880	15,930	14,840	13,440 lbs.		
209.9		83.0	98.4	111.5	131.2	152.5	160.4	177.1	196.8	209.9 ft.			
		39,670	32,810	28,460	23,630	19,840	19,840	17,790	15,860	14,770 lbs.			
196.8		100.7	111.5	131.2	144.3	164.0	185.3	196.8 ft.					
		39,670	35,360	29,470	26,460	22,870	19,840	19,840 lbs.					
164.0		100.4	111.5	131.2	144.3	164.0	ft.						
		39,670	35,260	29,390	26,380	23,140	lbs.						
131.2		100.4	111.5	131.2	ft.								
		39,670	35,310	29,970	lbs.								





R. máx.	En servicio In operation En service In Betrieb	5XR43 ... 330,600 lbs.	R. máx.	Fuera de servicio Out of service Hors service Ausser Betrieb	5XR43 297,540 lbs.
		9CR63 ... 244,640 lbs.			9CR63 315,170 lbs.

CFU-7.5	GR-12	TRA-7.5	TRA-7.5VC
10 hp.	4 x 88 ft.lbs.	2 x 55 ft.lbs.	2 x 55 ft.lbs
0 ⇄ 308 ft./min	0 ⇄ 0,8 rpm	0 ⇄ 78 ft./min	0 ⇄ 78 ft./min



Tensión de alimentación Operating voltage Tension de service Betriebsspannung	480 V 3 ph 60 Hz
--	---

Opcional Optional En option Kaufoption	*
---	----------



Tel.: (34) 948 335 020
 Fax: (34) 948 330 810
 e-mail: info@comansa.com
 www.comansa.com
 Poligono Industrial de Areta
 E-31620 HUARTE-PAMPLONA - SPAIN

DS.0406.32	01/05	21 LC 550 39.670 lbs.
-------------------	-------	------------------------------