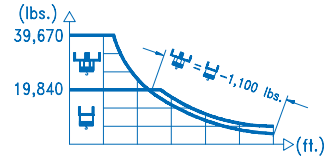
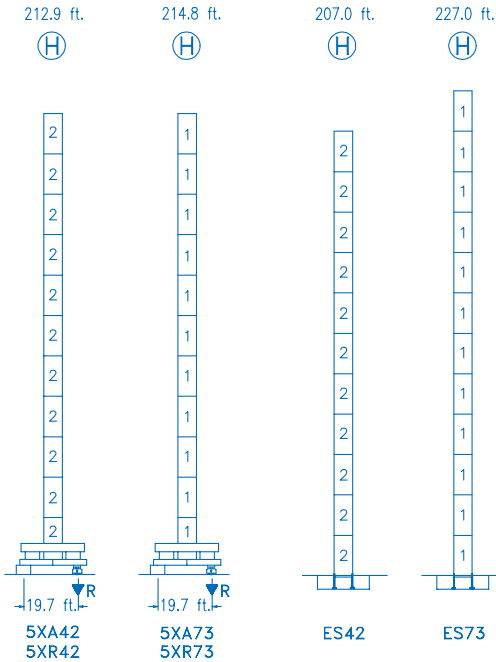


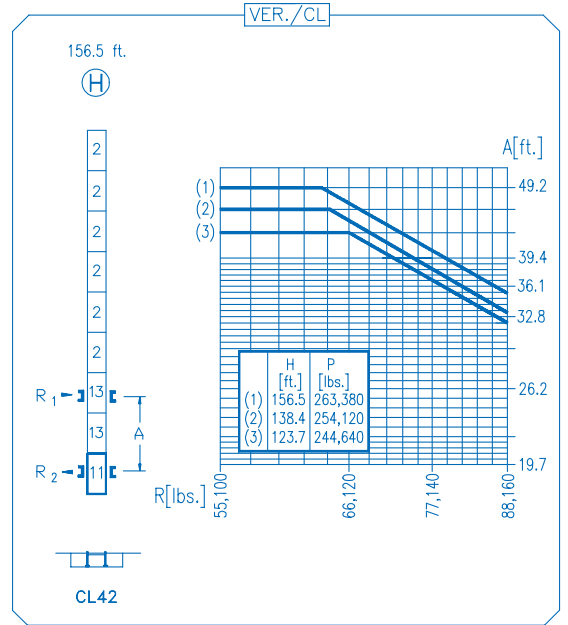
CE
DIN 15018 H1 B3

R	H								H							
262.4	54.4	65.6	82.0	98.7	100.0	111.5	131.2	144.3	164.0	177.1	196.8	209.9	229.6	242.7	262.4	ft.
	39,670	32,010	24,720	19,840	19,840	17,580	14,680	13,190	11,430	10,470	9,280	8,610	7,750	7,260	6,610	lbs.
242.7	59.0	65.6	82.0	106.3	110.2	111.5	131.2	144.3	164.0	177.1	196.8	209.9	229.6	242.7		ft.
	39,670	35,220	27,250	19,840	19,840	19,560	16,350	14,710	12,760	11,700	10,380	9,640	8,690	8,150		lbs.
229.6		71.2	82.0	98.4	111.5	129.9	135.1	144.3	164.0	177.1	196.8	209.9	229.6			ft.
	39,670	33,750	27,420	23,730	19,840	19,840	18,440	16,030	14,720	13,100	12,190	11,020				lbs.
209.9		71.5	82.0	98.4	111.5	130.9	136.4	144.3	164.0	177.1	196.8	209.9				ft.
	39,670	33,960	27,590	23,880	19,840	19,840	18,670	16,220	14,910	13,270	12,340					lbs.
196.8		73.8	82.0	98.4	111.5	135.5	142.0	144.3	164.0	177.1	196.8					ft.
	39,670	35,240	28,660	24,830	19,840	19,840	19,500	16,970	15,590	13,880						lbs.
177.1		72.8	82.0	98.4	111.5	133.5	140.7	144.3	164.0	177.1						ft.
	39,670	34,690	28,200	24,430	19,840	19,840	19,300	16,780	15,430							lbs.
164.0		76.4	82.0	98.4	111.5	140.8	148.9	164.0								ft.
	39,670	36,710	29,860	25,900	19,840	19,840	17,850									lbs.
131.2		80.4	82.0	98.4	111.5	131.2										ft.
	39,670	38,730	31,550	27,360	23,140											lbs.





N	Ref.	∅ (ft.)	h (ft.)
1	S35	8.2	18.0
2	D23	6.6	18.0
13	D23A	6.6	18.0
11	CLD23A	6.6	10.2



R. máx.	En servicio In operation En service In Betrieb	5XR42 ... 294,010 lbs.
		5XR73 ... 203,930 lbs.

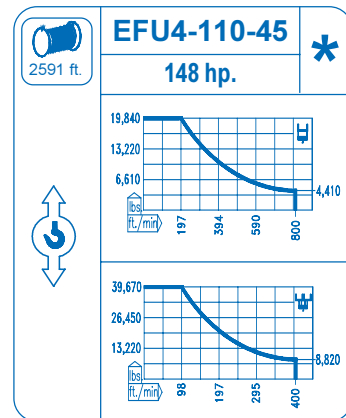
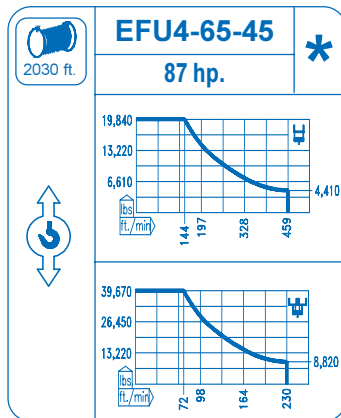
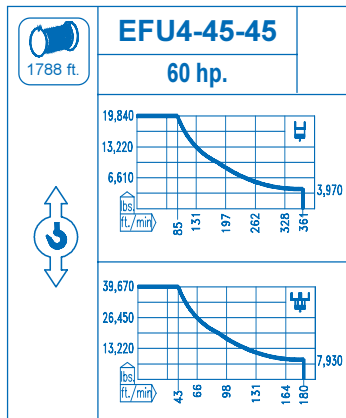
R. máx.	Fuera de servicio Out of service Hors service Ausser Betrieb	5XR42 247,290 lbs.
		5XR73 288,500 lbs.

CFU-7.5
10 hp.
0 ↻ 308 ft./min

GR-12
4 x 88 ft.lbs.
0 ↻ 0,7 rpm

TRA-7.5
2 x 55 ft.lbs.
0 ↻ 78 ft./min

TRA-7.5VC
2 x 55 ft.lbs.
0 ↻ 78 ft./min



Tensión de alimentación Operating voltage Tension de service Betriebsspannung	480 V 3 ph 60 Hz
--	---

Opcional Optional En option Kaufoption	*
---	----------