



BLUE HAT®
CRANE
913.321.0127

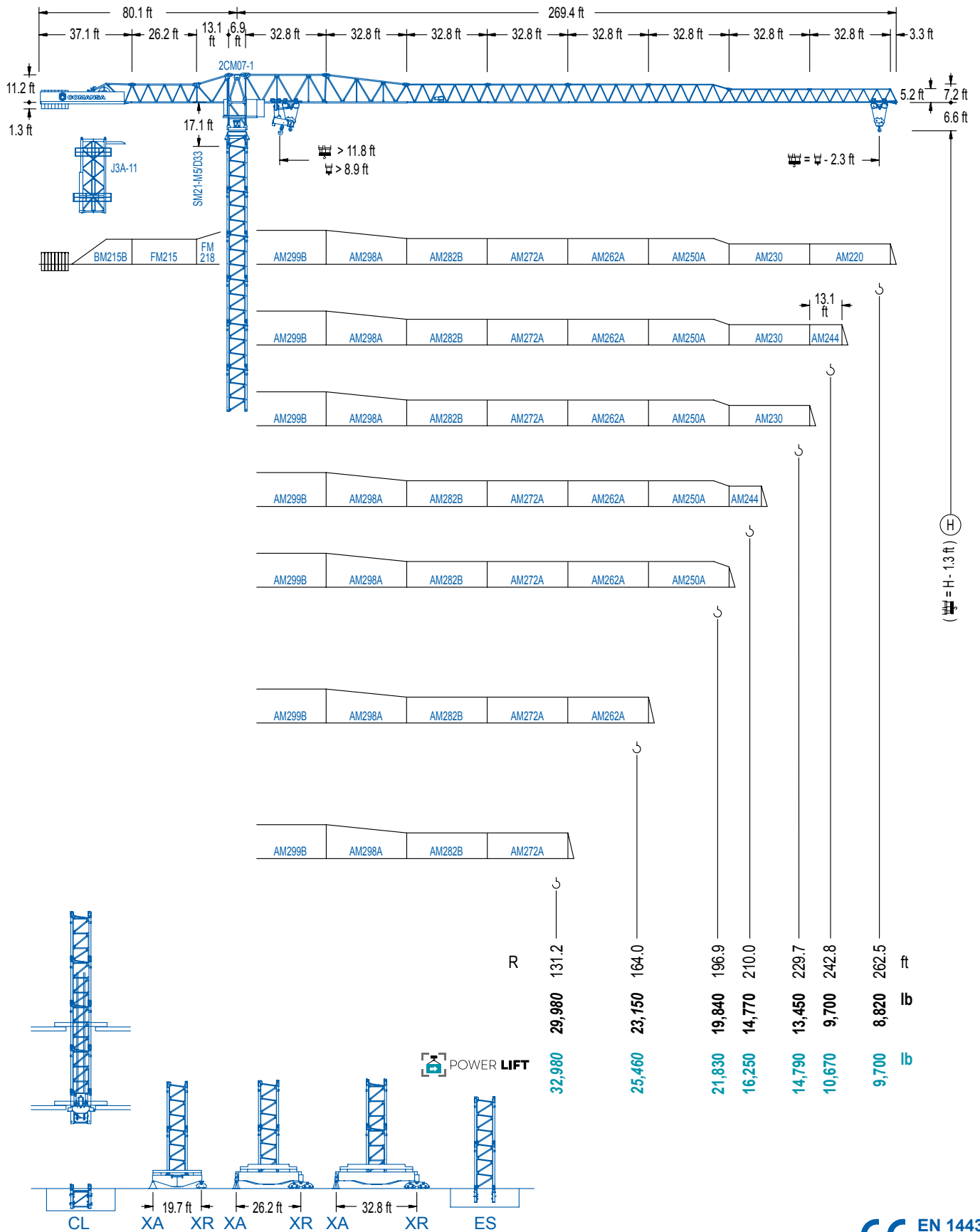


COMANSA

2100 Series

21 LC 550

44,090 lb



2100 Series

CE EN 14439 (C/25)

DIAGRAMA DE CARGAS

Load chart / Diagramme de charges / Lastdiagramm / Diagramma di carico / Диаграмма распределения нагрузки

R (ft)	Icon 1								Icon 2										
262.5	59.1	65.6	75.5	82.0	91.9	98.4	107.9	115.8	124.7	131.2	147.6	164.0	180.4	196.9	210.0	229.7	242.8	262.5	ft
	44,090	39,130	33,380	30,340	26,610	24,560	22,050	22,050	20,350	19,220	16,890	15,040	13,510	12,260	11,400	10,300	9,660	8,820	lb
242.8	59.4	65.6	75.5	82.0	91.9	98.4	108.6	116.8	124.7	131.2	147.6	164.0	180.4	196.9	210.0	229.7	242.8		ft
	44,090	39,260	33,490	30,420	26,700	24,650	22,050	22,050	20,440	19,310	16,980	15,100	13,580	12,320	11,440	10,340	9,700		lb
229.7		74.1	82.0	91.9	98.4	108.3	114.8	124.7	135.8	146.3	164.0	180.4	196.9	210.0	229.7				ft
		44,090	39,260	34,570	31,970	28,680	26,810	24,380	22,050	22,050	19,490	17,550	15,960	14,860	13,450				lb
210.0		73.5	82.0	91.9	98.4	108.3	114.8	124.7	135.2	145.7	164.0	180.4	196.9	210.0					ft
		44,090	39,000	34,300	31,720	28,460	26,610	24,210	22,050	22,050	19,380	17,460	15,870	14,770					lb
196.9			89.6	98.4	108.3	114.8	124.7	131.2	147.6	165.4	178.5	196.9							ft
			44,090	39,700	35,690	33,420	30,450	28,730	25,110	22,050	22,050	19,840							lb
164.0			91.5	98.4	108.3	114.8	124.7	131.2	147.6	161.7									ft
			44,090	40,650	36,550	34,220	31,200	29,430	25,750	23,150									lb
131.2			91.5	98.4	108.3	114.8	124.7	128.9											ft
			44,090	40,650	36,550	34,220	31,200	29,980											lb

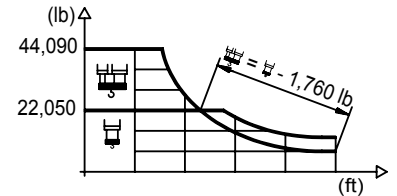
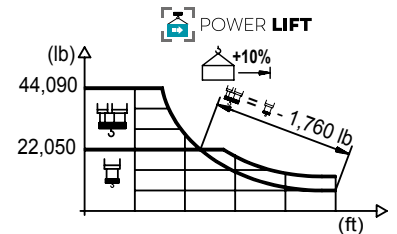


DIAGRAMA DE CARGAS POWERLIFT

Load chart PowerLift / Diagramme de charges PowerLift / Lastdiagramm PowerLift / Diagramma di carico PowerLift / Диаграмма распределения нагрузки PowerLift

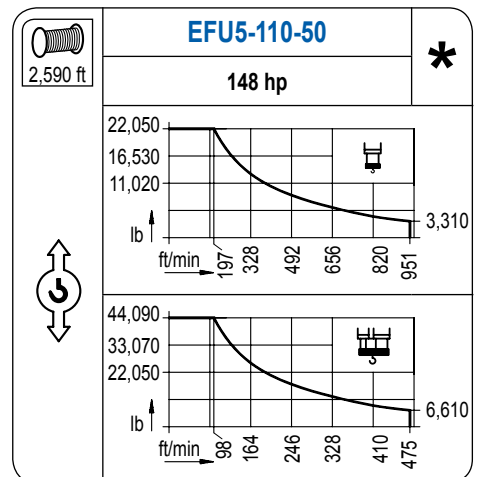
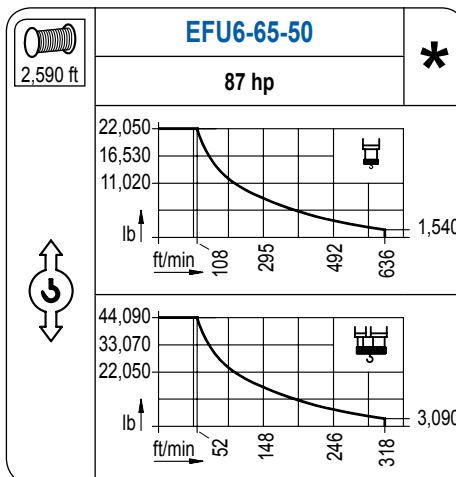
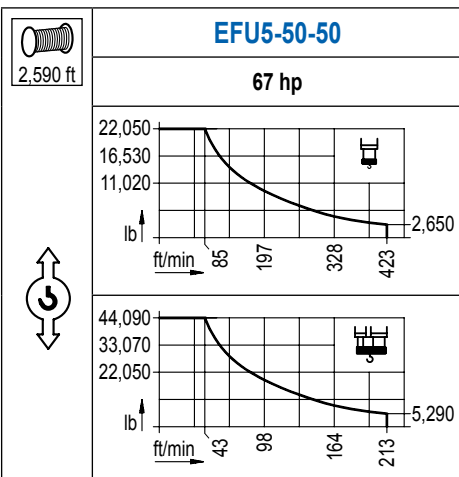
R (ft)	Icon 1								Icon 2											
262.5	64.0	72.2	82.0	91.9	98.4	108.3	117.1	125.7	131.2	147.6	157.5	164.0	180.4	190.3	196.9	210.0	229.7	242.8	262.5	ft
	44,090	38,400	33,200	29,170	26,940	24,140	22,050	22,050	21,030	18,470	17,220	16,450	14,810	13,960	13,450	12,500	11,290	10,600	9,700	lb
242.8	64.3	72.2	82.0	91.9	98.4	108.3	117.5	126.3	131.2	147.6	157.5	164.0	180.4	190.3	196.9	210.0	229.7	242.8		ft
	44,090	38,580	33,360	29,320	27,070	24,250	22,050	22,050	21,140	18,580	17,310	16,560	14,900	14,040	13,510	12,570	11,380	10,670		lb
229.7		80.4	91.9	98.4	108.3	114.8	124.7	131.2	148.0	159.4	164.0	180.4	190.3	196.9	210.0	229.7				ft
		44,090	37,960	35,140	31,550	29,520	26,870	25,330	22,050	22,050	21,380	19,270	18,190	17,530	16,340	14,790				lb
210.0		80.1	91.9	98.4	108.3	114.8	124.7	131.2	147.3	158.8	164.0	180.4	190.3	196.9	210.0					ft
		44,090	37,720	34,920	31,350	29,320	26,700	25,180	22,050	22,050	21,270	19,180	18,100	17,440	16,250					lb
196.9			97.8	108.3	114.8	124.7	131.2	147.6	157.5	164.0	180.4	194.9	196.9							ft
			44,090	39,310	36,820	33,580	31,700	27,760	25,790	24,600	22,050	22,050	21,830							lb
164.0			99.4	108.3	114.8	124.7	131.2	147.6	157.5	161.7										ft
			44,090	40,060	37,520	34,220	32,300	28,290	26,280	25,460										lb
131.2			99.4	108.3	114.8	124.7	128.9													ft
			44,090	40,150	37,590	34,300	32,980													lb



2100 Series

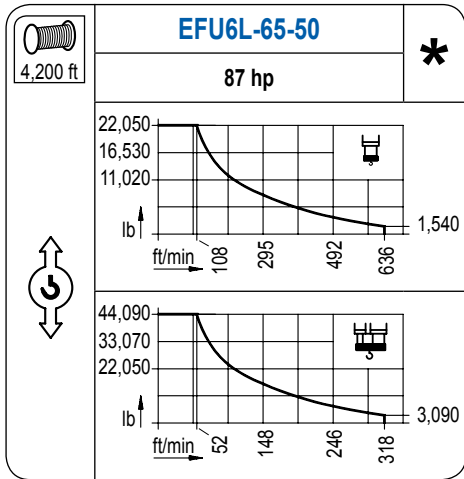
MECANISMOS

Mechanisms / Mécanismes / Antriebe / Meccanismi / Механизмы

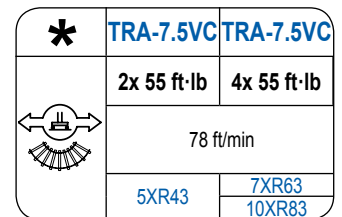
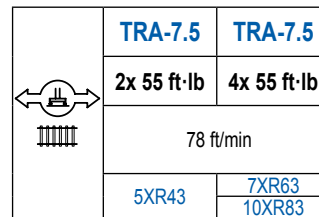
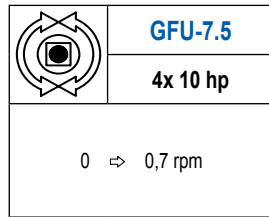
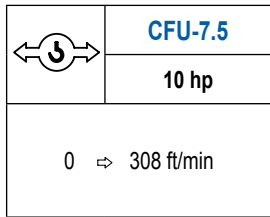
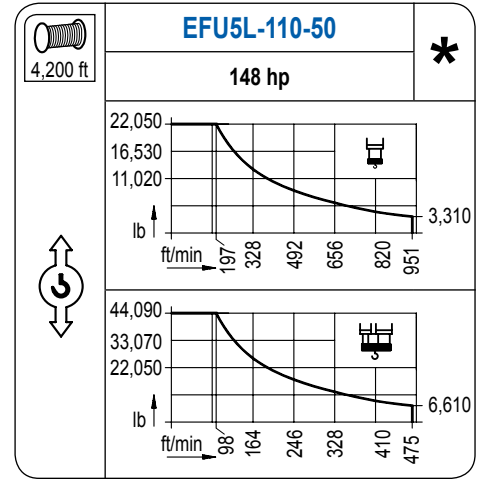


MECANISMOS

Mechanisms / Mécanismes / Antriebe / Meccanismi / Механизмы



Para mecanismos de alta capacidad de cable consultar cargas. / For mechanisms with high drum capacity, request loads. / Pour des mécanismes avec une grande capacité de câble il faut consulter. / Für Hubmechanismen mit hoher Kabelkapazität, Lastdiagramm anfragen. / Gru con tamburo ad alta capacità di avvolgimento fune, consultare il diagramma di carico. / Проконсультируйтесь с нагрузках при механизмах с большей вместимостью кабеля.



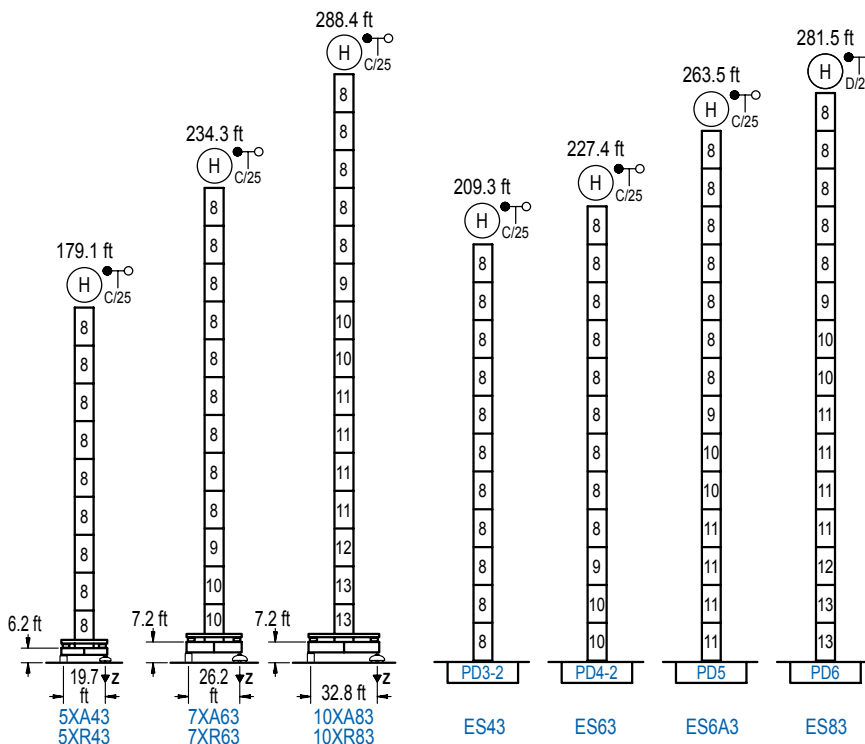
POTENCIA / POWER / PUISSANCE / LEISTUNG / POTENZA / МОЩНОСТЬ				Tensión de alimentación / Operating voltage / Tension de service / Betriebsspannung / Tensione di alimentazione / Напряжение источника питания	Generador / Generator / Générateur / Generator / Generatore / Генератор
Elevación / Hoist / Levage / Hub / Sollevamento / Тип механизма (подъем)	Carro / Trolley / Chariot / Laufkatze / Carrello / Грузовая тележка	Giro / Slewing / Rotation / Drehbewegung / Rotazione / Поворот	Traslación / Travel / Translation / Laufkatze / Verfahrbewegung / Traslazione / Ход	480 V 3ph 60 Hz	170 kVA 195 kVA 195 kVA 260 kVA 260 kVA
EFU5-50-50	CFU-7.5	(4x) GFU-7.5	(2x) TRA-7.5 (4x) TRA-7.5		170 kVA
EFU6-65-50					195 kVA
EFU6L-65-50					195 kVA
EFU5-110-50					260 kVA
EFU5L-110-50					260 kVA

Optional / Optional / En option / Kaufoption / Opzionale / Опционально

ALTURAS BAJO GANCHO

Heights under hook / Hauteurs sous crochet / Hakenhöhen / Altezza sotto gancio / Высота под крюком

∅ 8.2 ft



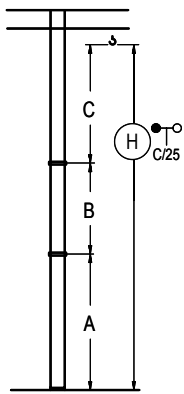
n°	Ref.	∅	h
8	D33	8.2	18.0
9	TD34	8.2	18.0
10	D34	8.2	18.0
11	D35	8.2	18.0
12	TD36B	8.2	18.0
13	D36B	8.2	18.0
1x D33 = 1x D33M			

Z máx.	En servicio / In operation / En service / In Betrieb / In servizio / При работе	5XR43... 300 kip 7XR63... 276 kip 10XR83... 293 kip
	Fuera de servicio / Out of service / Hors service / Ausser Betrieb / Fuori servizio / В стационарном состоянии	5XR43... 225 kip 7XR63... 311 kip 10XR83... 414 kip

Otras zonas de viento o alturas superiores consultar / Other wind zones or additional hook heights on request / Autres zones de vent ou des hauteurs supplémentaires sur demande / Andere Windzonen oder weitere Hakenhöhen auf Anfrage / Per zone con velocità del vento particolari o altezze superiori consultare il fabbricante / При других ветренных зонах о при большой высоте проконсультируйтесь с нами

GRÚA ARRIOSTRADA

Braced crane / Grue à entretoisement / Abgespannter Kran / Gru ancorata / Нарастиваемый кран

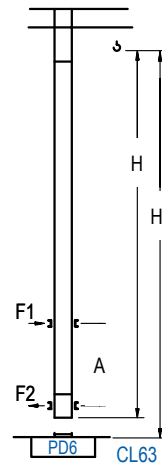


	5XA43	7XA63	10XA83
A max	132.5	187.7	241.8
A min	78.4	79.4	205.7
B max	-	108.3	-
B min	54.1	54.1	54.1
C max	172.9	154.9	154.9
H max	305.4	395.7	342.5

	ES43	ES63	ES6A3	ES83
A max	162.7	180.8	216.9	234.9
A min	72.5	72.5	144.7	198.8
B max	-	108.3	-	108.3
B min	54.1	54.1	54.1	54.1
C max	154.9	154.9	154.9	154.9
H max	317.6	425.9	335.6	443.9

GRÚA TREPADORA

Internal climbing crane / Grue avec cage de télescopage intérieure / Kran mit klettern im Gebäude / Gru in rampante in cavedio / Кран с самоподъемом



H	Hs < 1,310 ft	
	A max (ft)	A min (ft)
203.4 ft 5x D33 + TD34 + 4x D34A + CLD34A-24	71.9	32.8
185.4 ft 4x D33 + TD34 + 4x D34A + CLD34A-24	62.7	26.2
167.3 ft 3x D33 + TD34 + 4x D34A + CLD34A-24	53.8	26.2

n°	Ref.	h
8	D33	8.2 18.0
9	TD34	8.2 18.0
20	D34A	8.2 18.0
21	CLD34A-24	8.2 12.5

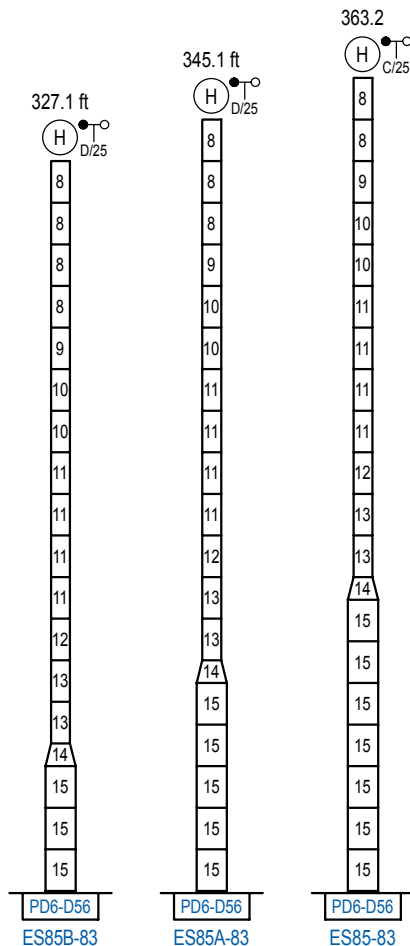
1x D33 = 1x D33M

Otras zonas de viento, alturas superiores, arriostramientos o trepado interno consultar / Other wind zones, additional hook heights, tie frames or internal climbing on request / Autres zones de vent, des hauteurs supplémentaires, entretoisements ou grues avec cage de télescopage intérieure, sur demande / Andere Windzonen, weitere Hakenhöhen, Abspannungen zum Gebäude oder Klettern im Gebäude auf Anfrage / Per zone con velocità del vento particolari, altezze superiori, ancoraggi o rampante in cavedio, consultare il fabbricante / При других ветренных зонах, при большой высоте, привязках к зданию или наращивании крана внутри здания проконсультируйтесь с нами

ALTURAS ESPECIALES

Special heights / Spéciaux hauteurs / Extra Höhen / Conformazioni raccordate per altezze speciali / Для специальной высоты

Ø 13.1 ft



n°	Ref.	h
8	D33	8.2 18.0
9	TD34	8.2 18.0
10	D34	8.2 18.0
11	D35	8.2 18.0
12	TD36B	8.2 18.0
13	D36B	8.2 18.0
14	TD56D36	13.1 9.8
15	D56	13.1 18.0

1x D33 = 1x D33M

Otras zonas de viento o alturas superiores consultar / Other wind zones or additional hook heights on request / Autres zones de vent ou des hauteurs supplémentaires sur demande / Andere Windzonen oder weitere Hakenhöhen auf Anfrage / Per zone con velocità del vento particolari o altezze superiori consultare il fabbricante / При других ветренных зонах о при большой высоте проконсультируйтесь с нами